

# Modern Solutions for Traditional Requirements; **Antalya Fruit Wholesale Market**

Bahadır SENOL, SNL Tensi, *Brand Manager*

Hilal SENOL, SNL Tensi, *Project Manager*

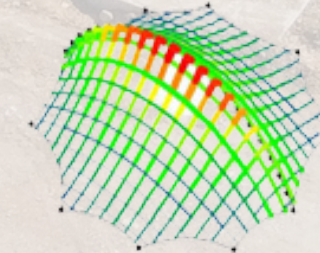
26TH MAY, 2025



**SNL**  
tensi



ŞENOL MAKİNA



**TEXTILE ROOFS**

# Who we are?

We are **SNLtensi**, a brand specializing in **steel wire ropes and load tensioning elements**. With our expertise in tensioning systems, we provide steel wire ropes and fitting equipments for various projects.



[snltensi.com](http://snltensi.com)



# What we do for the lightweight structures systems?

Our competitive advantage lies in our in-house production capabilities and our ability to deliver fast, project-specific solutions with technical support.



SNL  
tensi



SNL  
wire



SNL  
tensi

CHROME

# What we do?



**SNL**  
tensi

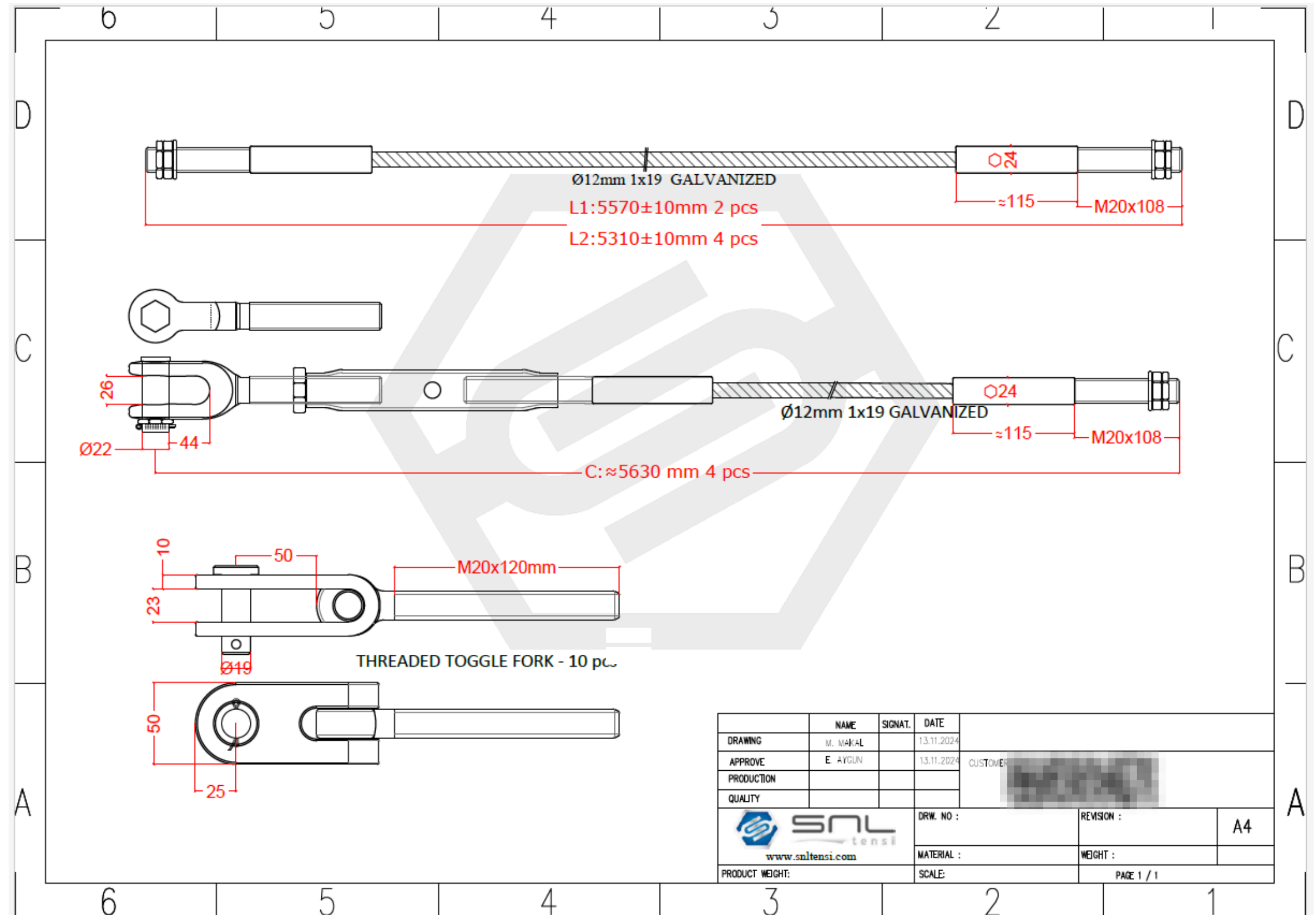
# What we do?



- Standard production
- Project based special designs



# What we do?



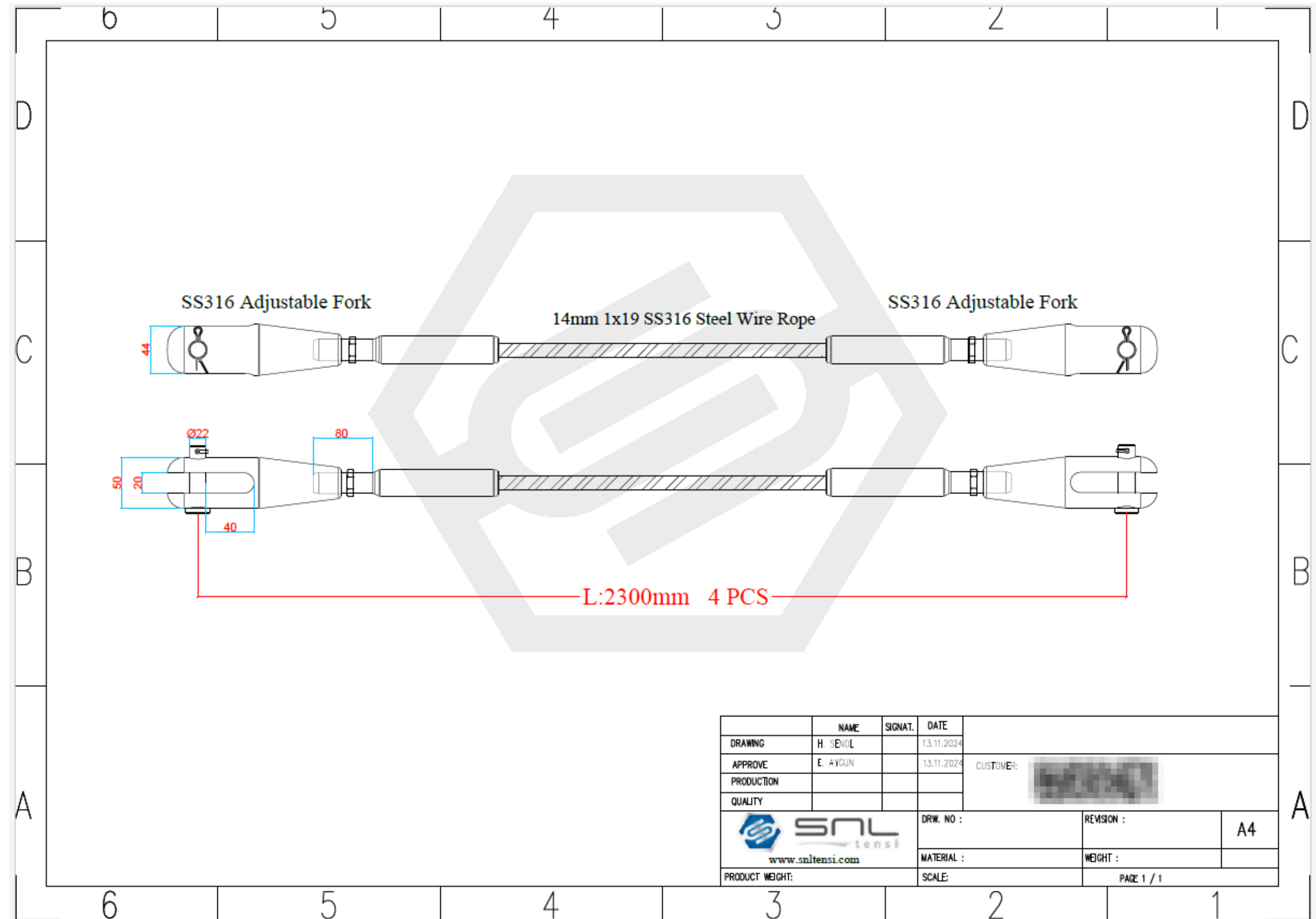
**SNL**  
tensi

# What we do?



**SNL**  
tensi

# What we do?

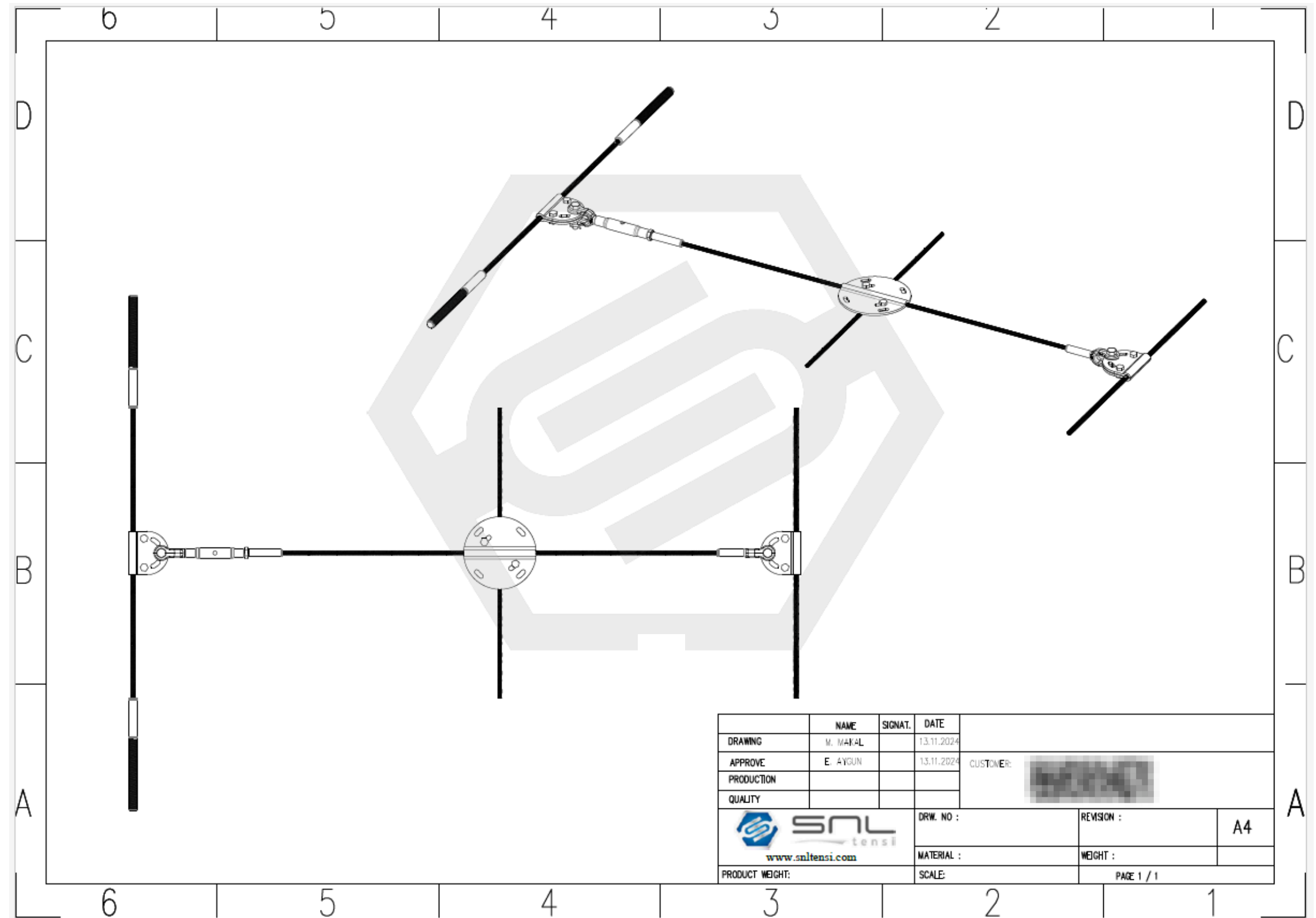


**SNL**  
tensi

# What we do?

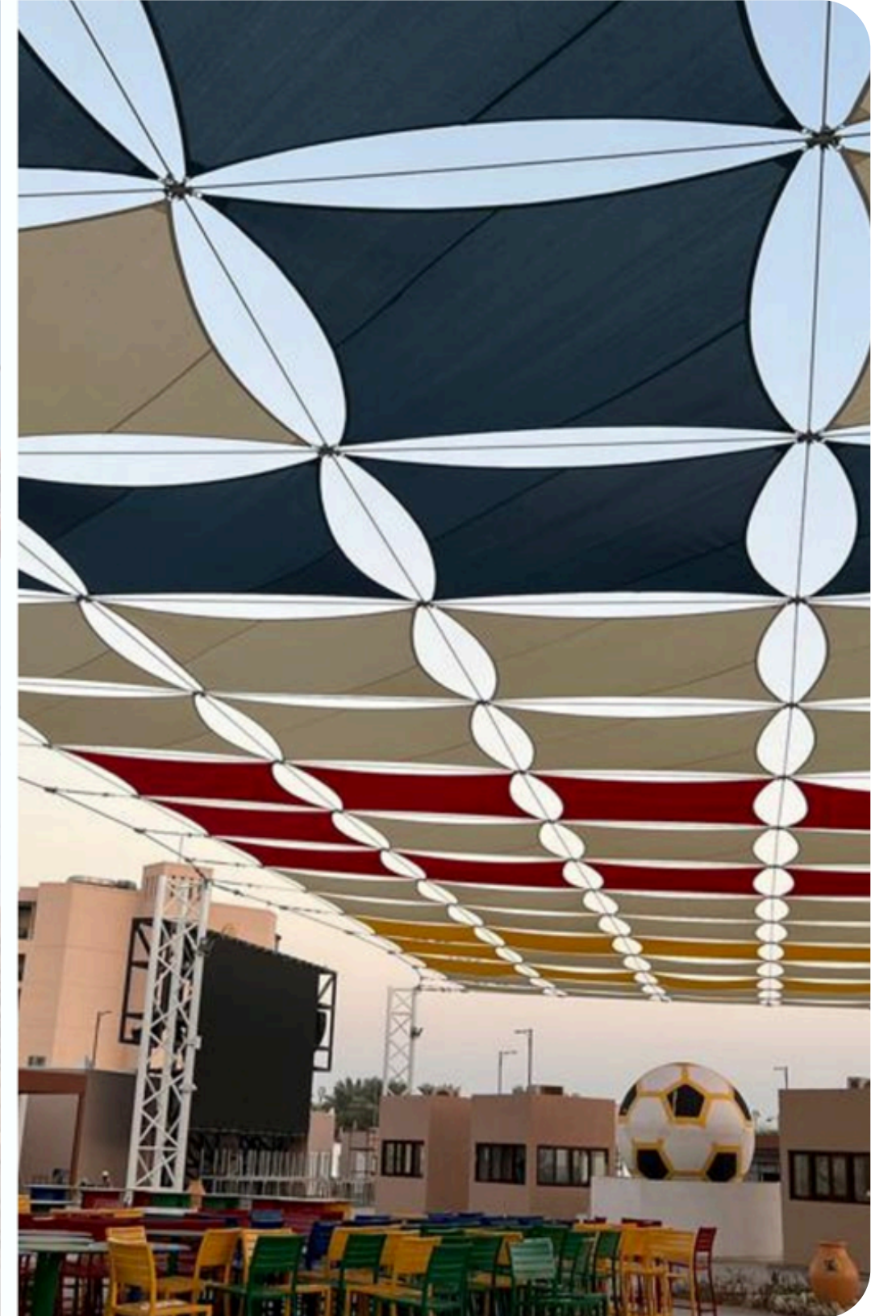
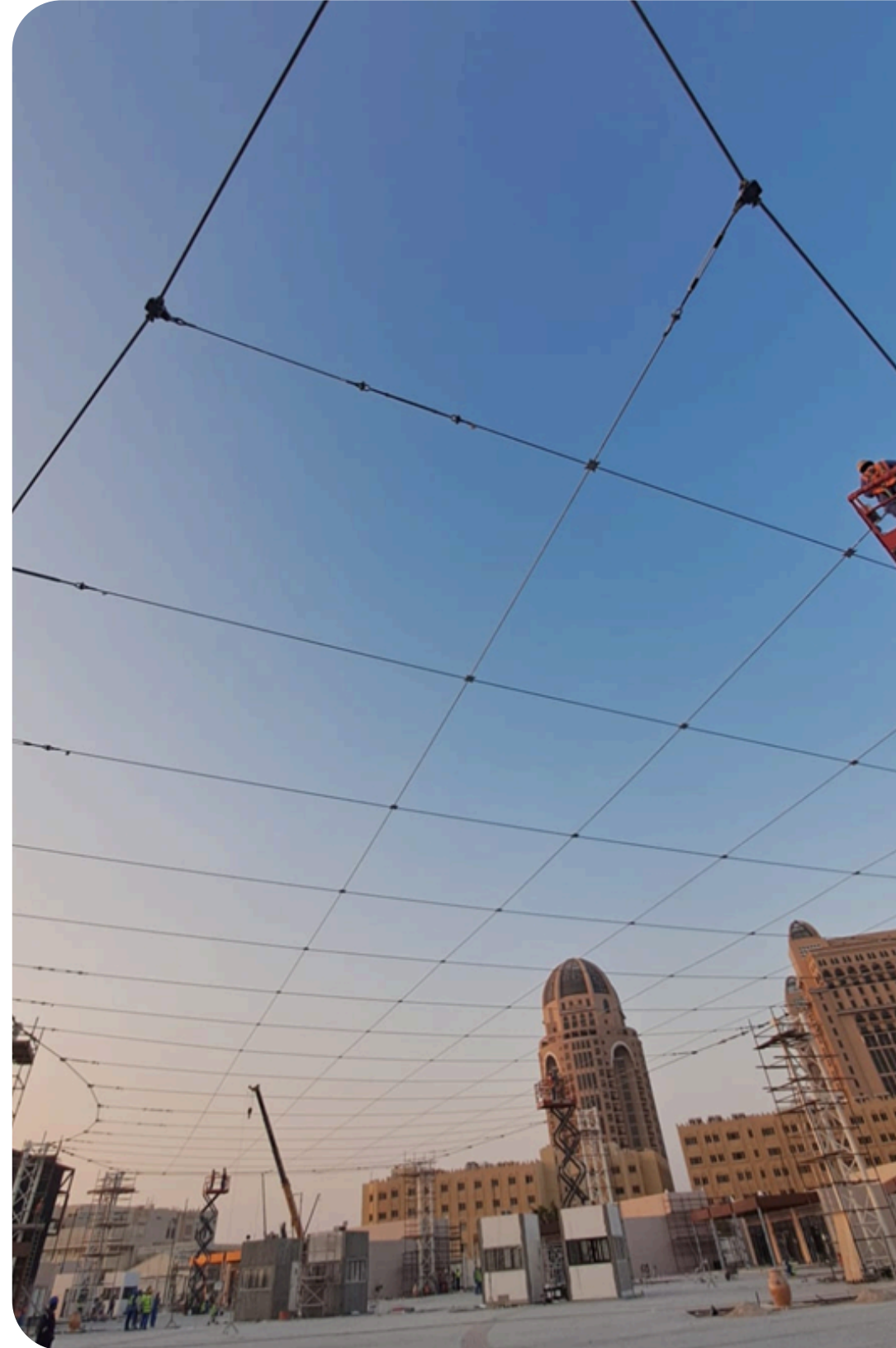


# What we do?



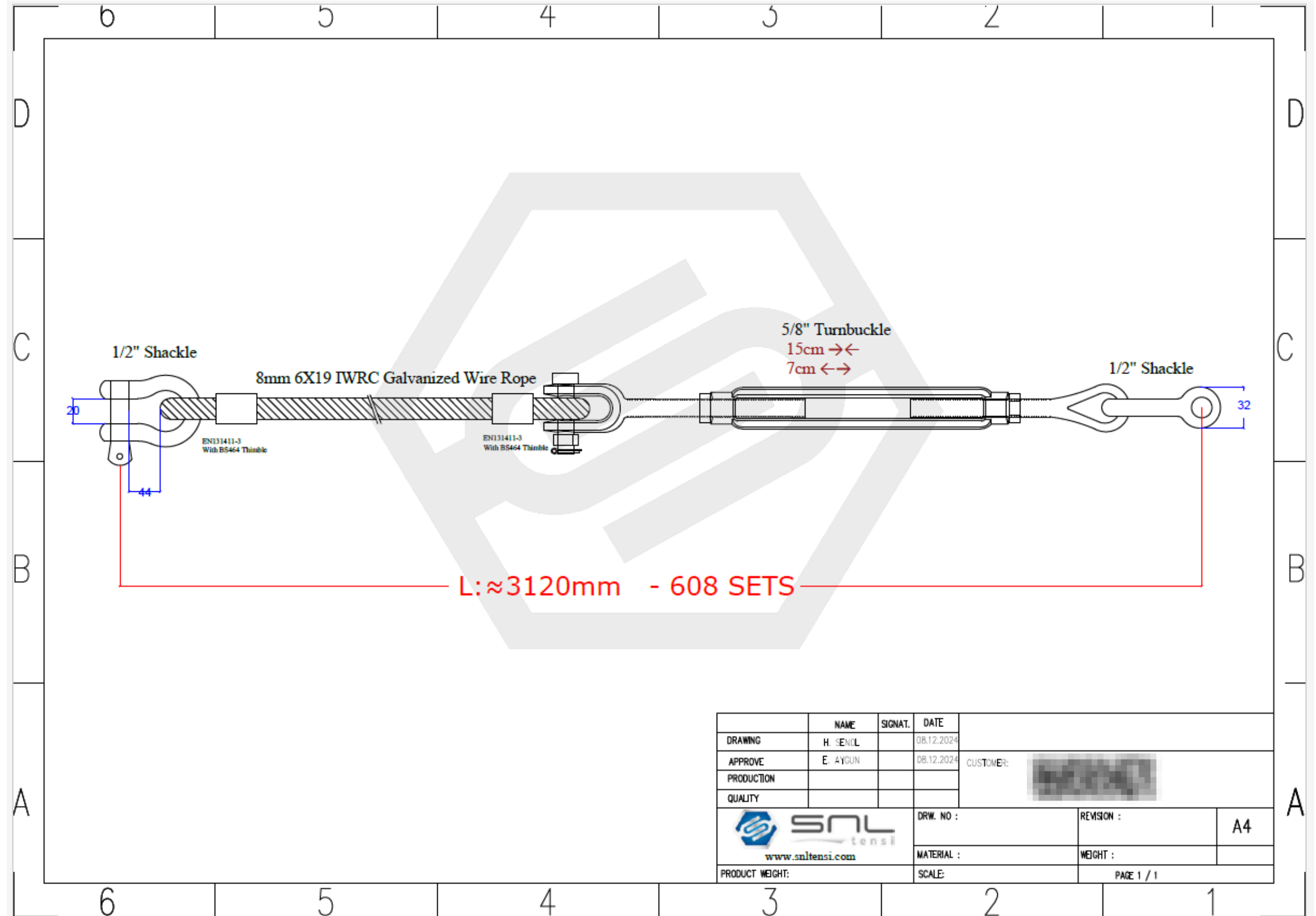
**SNL**  
tensi

# What we do?



**SNL**  
tensi

# What we do?



**SNL**  
tensi

# What we do?



**SNL**  
tensi

- ✓ SAFETY FACTOR
- ✓ THE RIGHT MATERIAL
- ✓ TEST REPORTS
- ✓ INSPECTION
- ✓ CERTIFICATION



**SNL**  
tensi

# Custom Design & Production

All cables and connectors were specifically designed to meet project requirements.



Steel wire ropes:  
Optimized for higher  
strength and  
durability.

Fast and complete  
delivery, meeting both  
local and global  
standards.



Easy and quick  
installation.

Integrated steel ropes  
and lifting systems for  
a strong and stable  
structure.





**1100T, 600T, 300T, 150T, 70T**

## **HYDRAULIC SWAGING MACHINES**

High Quality Production acc. to  
European Standards



**SNL**  
tensi

**Ropsen**

For centuries, marketplaces have been the heart of civilizations—where merchants trade, cultures meet, and communities thrive.

Despite the passage of time, one thing has remained constant:

- The demand for reliable,
- Durable
- Aesthetically pleasing shading systems.

*By combining traditional market needs with modern technology.*

We aim to reach;

- increase the efficiency,
- reduce energy consumption,
- and support sustainable agriculture.



**SNL**  
tensi

# About Antalya

**Agricultural Hub**



**Important for Export**



**Organic Farming**



**Source of Employment**



**Developing Technological Projects**



**SNL**  
tensi



As the demand for high-quality agricultural products grows, so does the need for well-designed market infrastructure, such as the Antalya Wholesale Fruit Market.

The goal is to:

- ✓ Protect products from the harsh sun and heat
- ✓ Create healthier storage conditions
- ✓ Improve productivity



SNL  
tensi

**The Antalya Wholesale Fruit Market Project** required a custom-designed shading system to increase market functionality and efficiency.

Total shade area: **5000m<sup>2</sup>**

**Our approach focused on:**

- High-strength steel cables and membrane materials, ensuring resistance to Antalya's high temperatures and strong winds.
- Light and robust design, maximizing coverage while minimizing structural loads.



**SNL**  
tensi

## Technical Details

- **M50 lifting elements** are high-strength and suitable for large-scale projects. **(Breaking Load: 100T )**
- **Tensioning elements** ensure system stability, creating a structure that is both aesthetically and technically strong.



## Membrane & Steel Wire Rope Integration

- Steel wire ropes and membrane materials were selected for **durability in all weather conditions.**
- The project follows **sustainable design principles.**
- Serves as **a model for other agricultural hubs.**



**SNL**  
tensi



SNL  
tensi

# Project Results

The Antalya Wholesale Fruit Market Project successfully:

✓ Increased shading performance

✓ Increased energy efficiency

✓ Improved structural longevity

✓ Optimized logistics and space utilization



This project was carried by Asma Germe Company





REFFERANCE  
PROJECTS

# VIALAND MALL ISTANBUL / TÜRKİYE



SNL  
tensi



REFFERANCE  
PROJECTS

# AZERSUN ARENA SUREHANI / AZERBAIJAN



SNL  
tensi



REFFERANCE  
PROJECTS

# RADISSON HOTEL WARSAW / POLAND



SNL  
tensi



REFFERANCE  
PROJECTS

**NAIROBI / KENYA**



**SNL**  
tensi



REFFERANCE  
PROJECTS

# AMPHITHEATRE DJERBA / TUNUSIA



SNL  
tensi



REFFERANCE  
PROJECTS

**ATAKOY INT.  
YOUTH CENTER  
ISTANBUL /  
TÜRKİYE**



**SNL**  
tensi

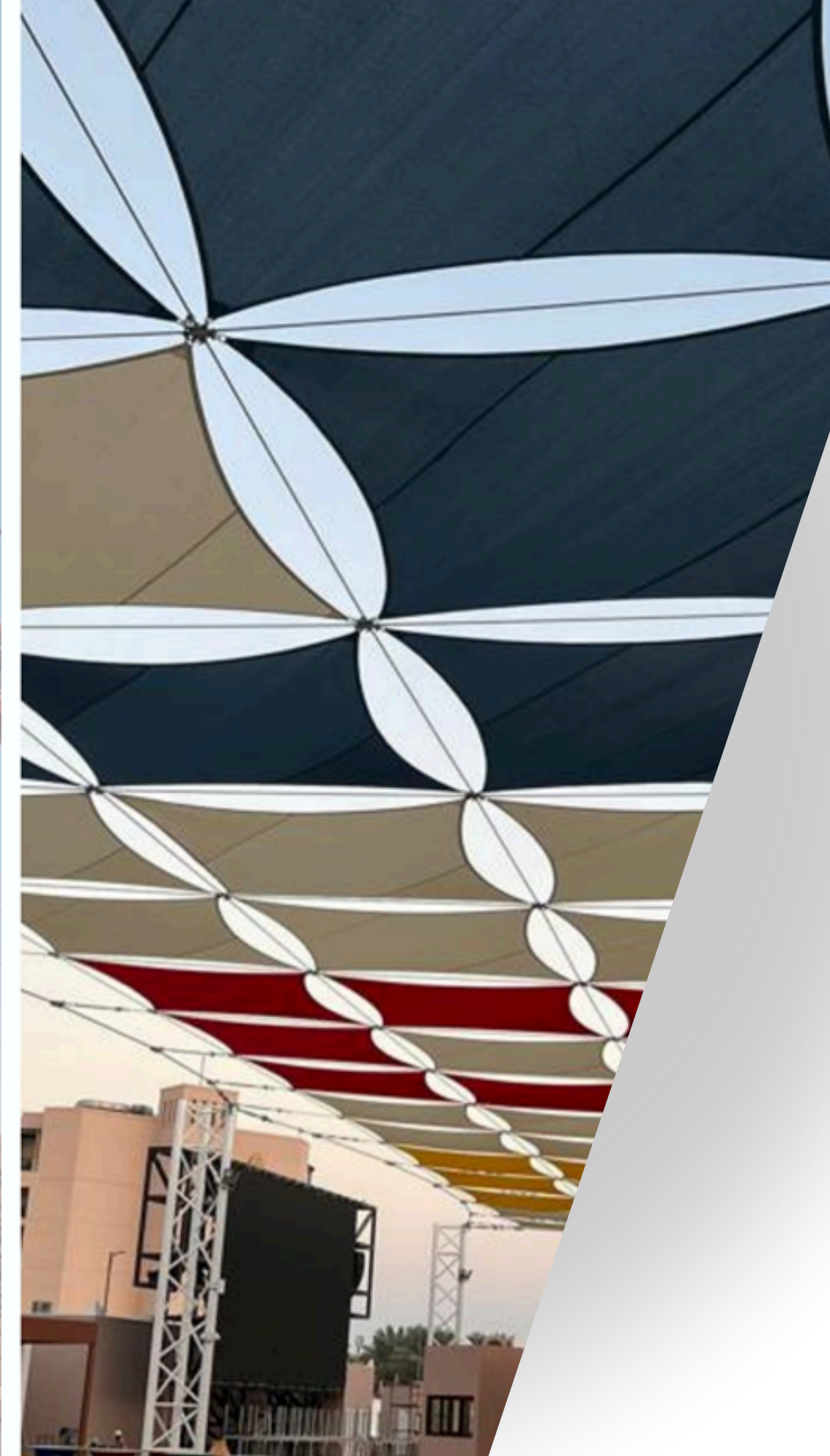


REFERANCE  
PROJECTS

**FIFA WORLD CUP  
FOOD & BEVERAGE  
AREA  
LUSAIL / QATAR**



**SNL**  
tensi



# Thank You!

*ANY QUESTION ?*



[bahadir@senolmakina.com](mailto:bahadir@senolmakina.com)

[export@snltensi.com](mailto:export@snltensi.com)

[www.snltensi.com](http://www.snltensi.com)