

NEW TREND 'GLAMPING TENTS' – HOW TO DETAIL THEM?

„Textile Roofs Workshop“

www.asma-germe.com

AG
ASMA GERME



NEW TREND 'GLAMPING TENTS' – HOW TO DETAIL THEM?

1st system



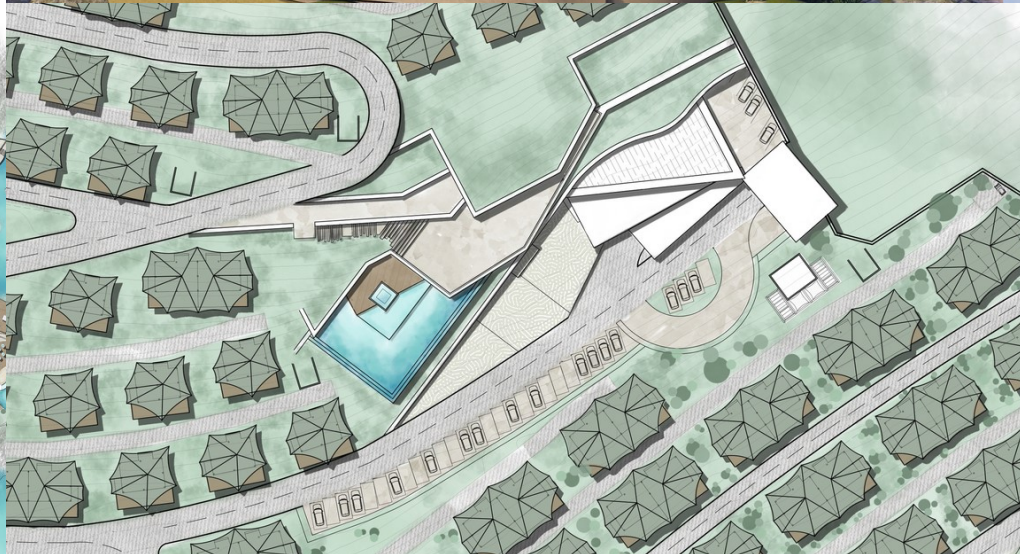
www.asma-germe.com

2nd system



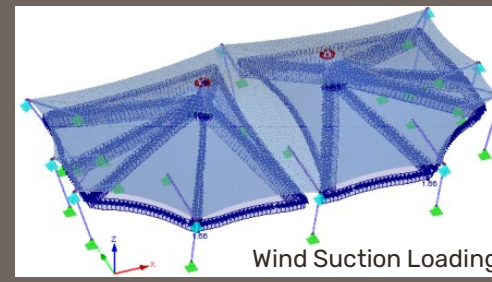
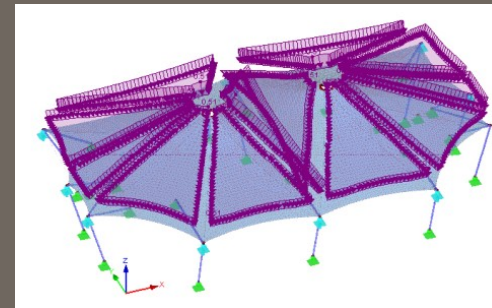
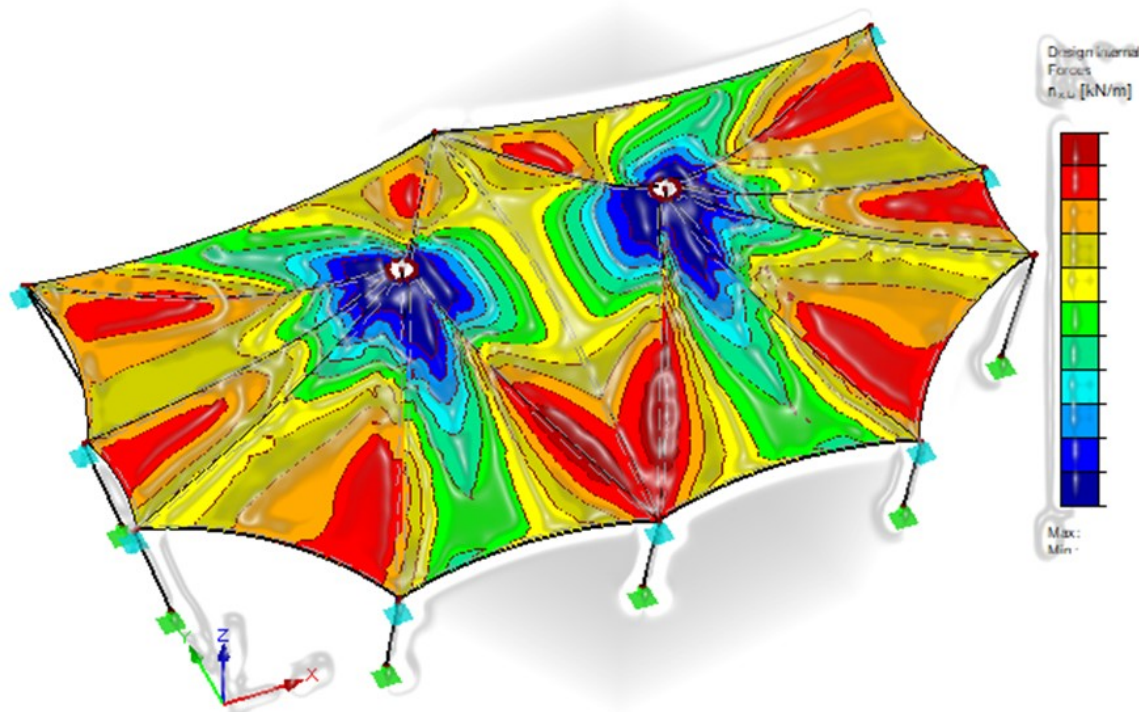
AG
ASMA GERME

GENERAL DESIGN PRINCIPLES



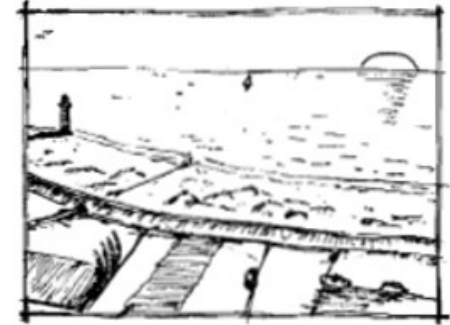
STRUCTURAL DESIGN PRINCIPLES

EN 1991-1-4 Eurocode 1. Actions on structures General actions : Wind Loads

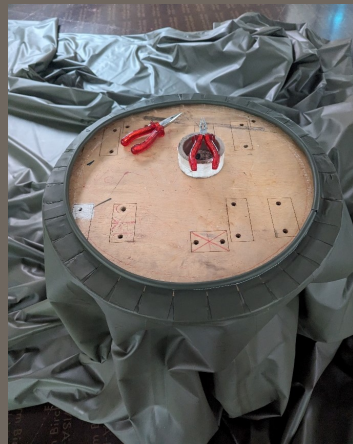


TERRAIN CATEGORY = 0

Sea, Coastal Area
Exposed to the open sea

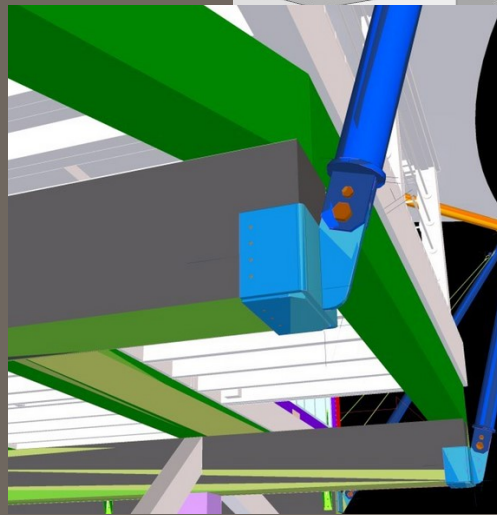
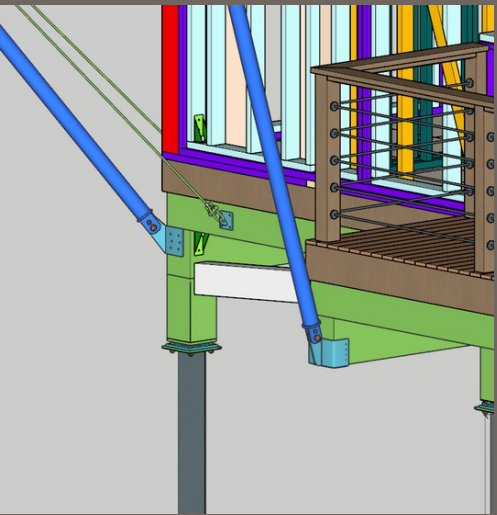
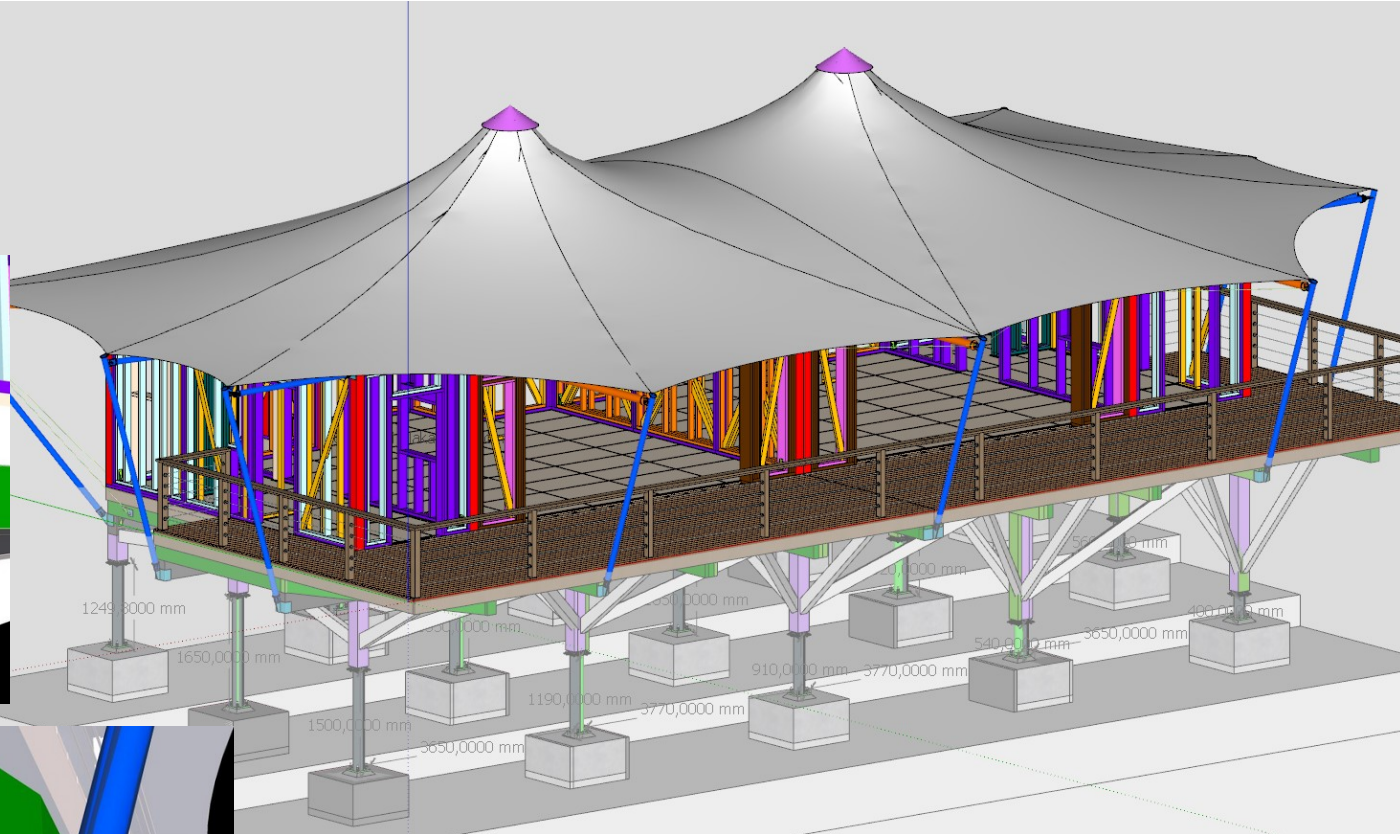
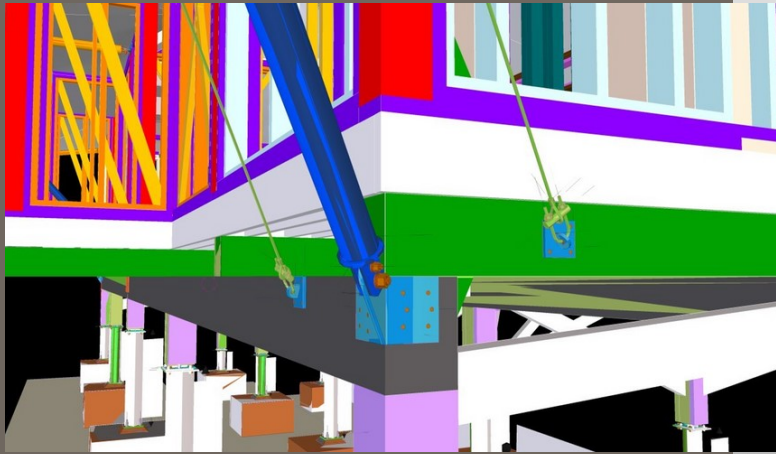


MANUFACTURE



MANUFACTURE





DETAILS STEEL SYSTEM

MANUFACTURE



WOODEN STRUCTURE



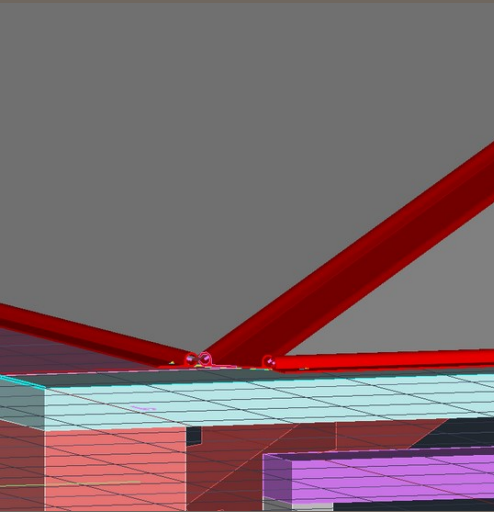
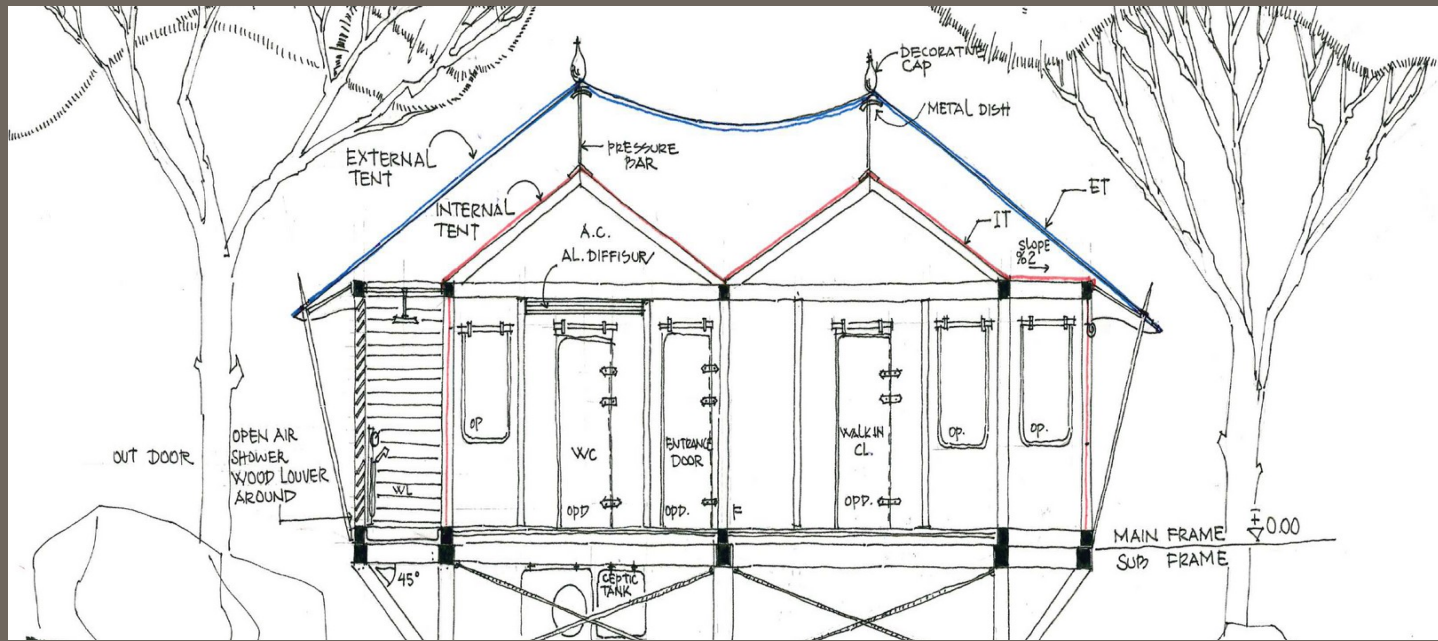


STEEL SYSTEM



STEEL SYSTEM





DETAILS INTERIOR ROOF

DETAILS INTERIOR ROOF



DETAILS INTERIOR ROOF

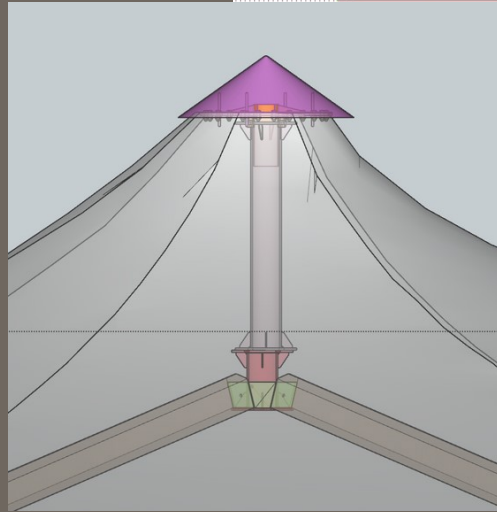
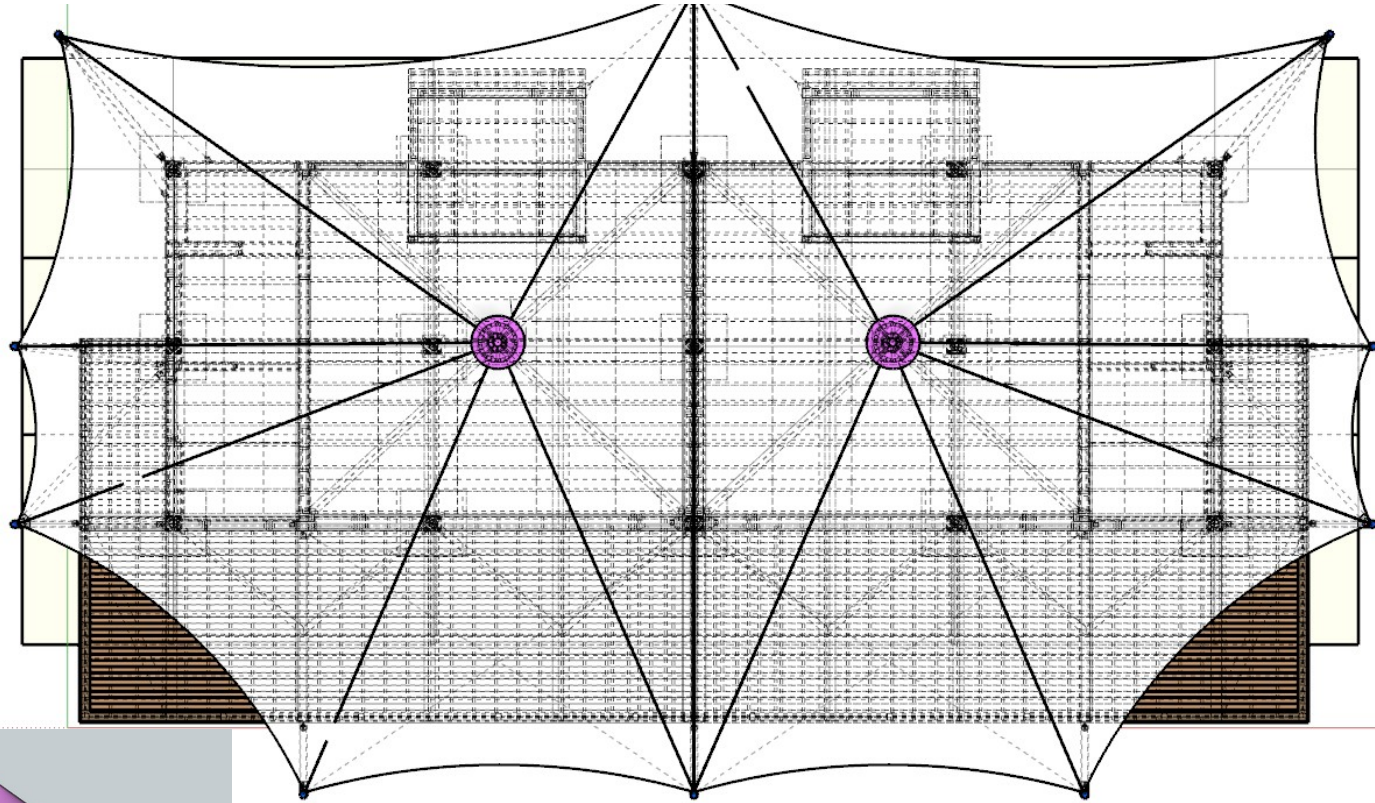


DETAILS INTERIOR ROOF



DETAILS INTERIOR ROOF





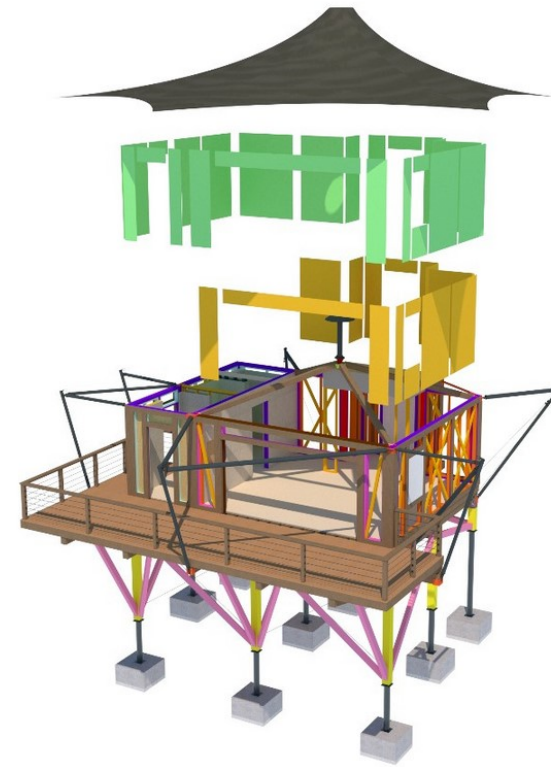
DETAILS ROOF

ROOF

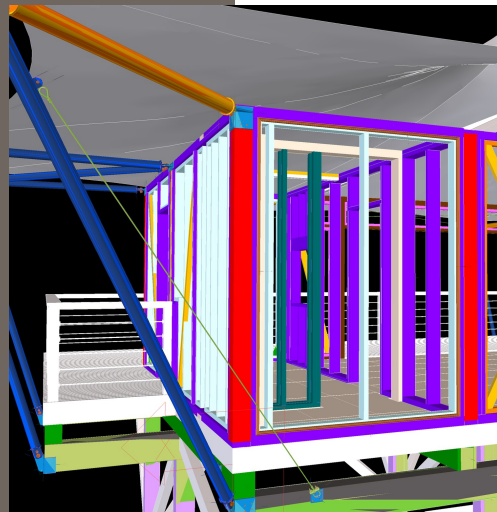
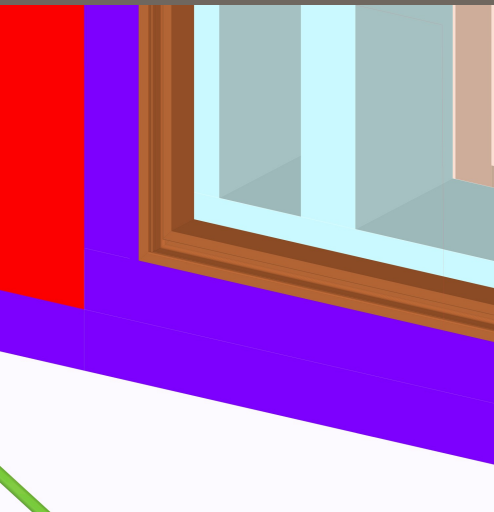


ROOF





DETAILS FACADE



DETAILS FACADE



DETAILS FACADE



DETAILS FACADE



FACADE



COMPLETED PROJECTS



COMPLETED PROJECTS





COMPLETED PROJECTS



COMPLETED PROJECTS



COMPLETED PROJECTS





Thank
you



www.asma-germe.com