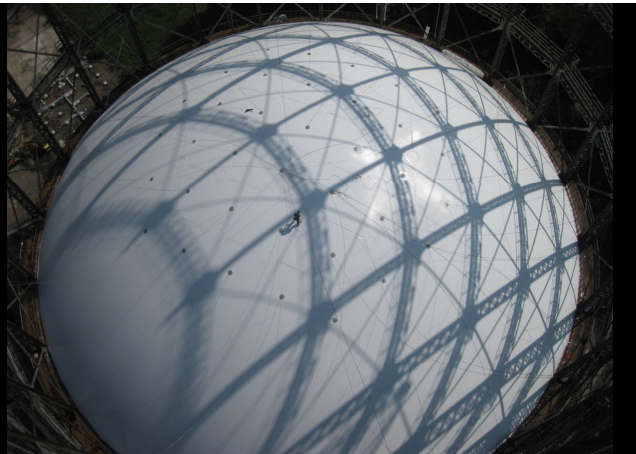
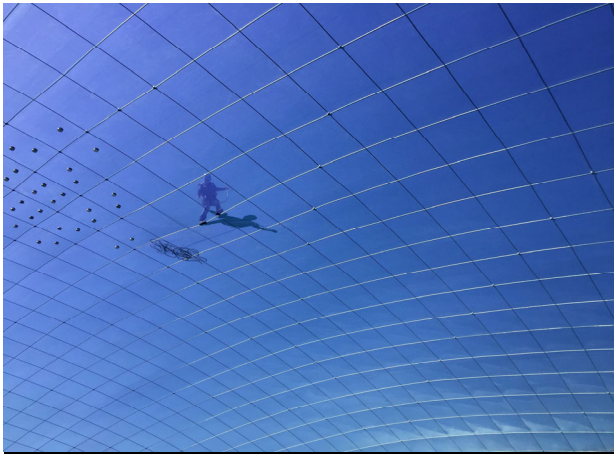


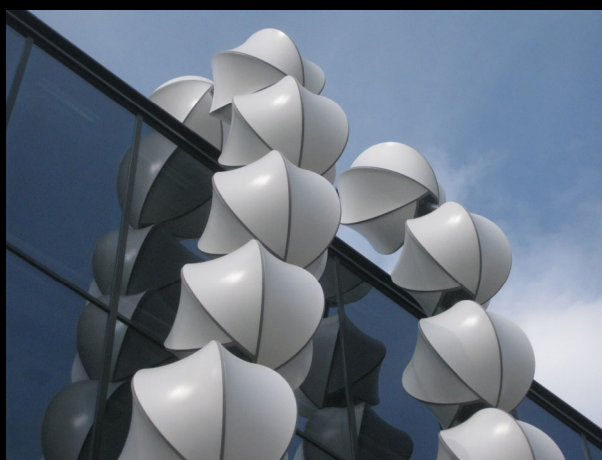
„Experimental Project“ - forming an ETFE-cushion

Textile Roofs 2024

Stev Bringmann – 3dtex GmbH; www.3dtex.de



Stev Bringmann – 3dtex GmbH; www.3dtex.de





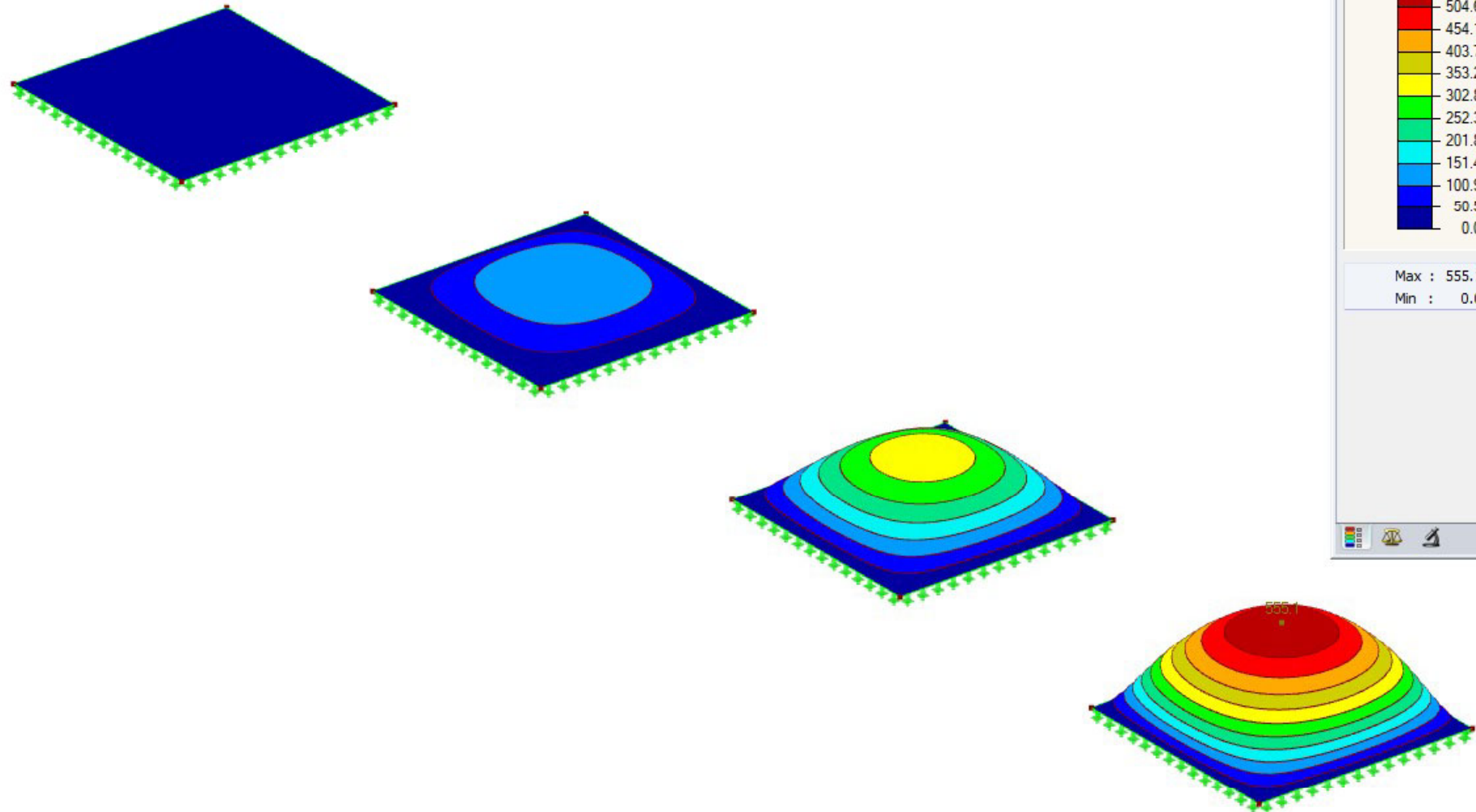
Textile Roofs 2017 - Berlin, Germany

2024 - „Experimental Project“

Forming an ETFE-cushion



Global Deformations u [mm]
RF-FORM-FINDING



Panel

Global Deformations
u [mm]

| |
|-------|
| 555.1 |
| 504.6 |
| 454.1 |
| 403.7 |
| 353.2 |
| 302.8 |
| 252.3 |
| 201.8 |
| 151.4 |
| 100.9 |
| 50.5 |
| 0.0 |

Max : 555.1
Min : 0.0

555.1



LUNCH!